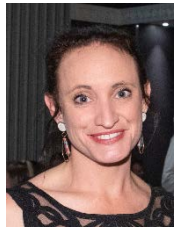




What gets clicked, might not get liked

Measuring the “success” of social media



Jodie Ward

Queensland Department of Agriculture and Fisheries
FutureBeef
Brisbane, QLD

A joint initiative of:



FutureBeef social media

Twitter



FutureBeef @FutureBeef

3 days ago

How to reliably establish leucaena, Webinar, 11 September, 12.30 pm AEST.

In this webinar learn about the climate and soil requirements of leucaena together with the recommended practices to prepare, plant and establish it successfully.

ow.ly/DLYm50vN55b



Facebook



FutureBeef

3 days ago

How to reliably establish leucaena, Webinar, 11 September, 12.30 pm AEST.

In this webinar, join Stuart Buck (Queensland Department of Agriculture...

[Read More](#)



Boost Post



Write a comment...



Scheduling programs – SmarterQueue

The screenshot shows the SmarterQueue web application interface. The browser address bar displays the URL <https://smarterqueue.com/schedule?src=tn>. The navigation menu includes "Add Content", "Queue", "Analytics", "Categories", "Posting Plan" (selected), and "Profiles". A green button in the top right corner says "Get SmarterQueue for FREE!".

The main interface features a sidebar on the left with the following sections:

- Edit Filters:** "No timeslots hidden"
- ADD TIMESLOTS:**
 - 1. Select a Category: dropdown menu set to "breeders/ bulls"
 - 2. Select profiles: radio buttons for "ALL" (selected) and "NONE"
 - 3. Drag onto Posting Plan: a "breeders/ bulls" category card with a plus icon
- OR**
- Click directly in the Posting Plan to add Timeslots
- Delete Visible Timeslots** (button)

The main calendar grid shows a weekly view from Monday to Sunday. The time slots range from 1:00 am to 1:00 pm. The following table summarizes the visible timeslots:

Time Slot	Mon	Tue	Wed	Thu	Fri	Sat	Sun
1:00 am							
2:00 am							
3:00 am							
4:00 am							
5:00 am					breeders/ bulls (5:45 am)		
6:00 am	business (6:15 am)	glm (6:30 am)	nutrition (6:45 am)	health/welfare (6:45 am)	Add a timeslot	OH&S (6:00 am)	calves/weaners (6:45 am)
7:00 am							
8:00 am							
9:00 am							
10:00 am							
11:00 am							
12:00 pm							
1:00 pm							
Number of Timeslots each day	2	2	2	2	2	2	2

At the bottom of the interface, the timezone is set to "6:03 pm Australia/Brisbane (Change)". There are also "Tutorials" and "Help" buttons in the bottom right corner.

Scheduling programs - Hootsuite

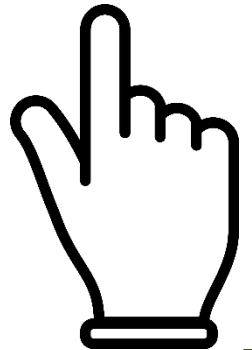
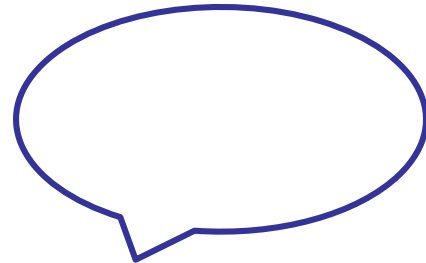
The screenshot displays the Hootsuite dashboard for a user named FutureBeef. The interface is organized into several sections:

- Streams:** Located at the top, it includes a 'New Post' button and an 'Upgrade my plan' button.
- Navigation Tabs:** Below the streams, there are tabs for 'Timeline', 'Scheduled', 'Messages', and 'Activity', all for the 'FutureBeef' account.
- Timeline:** Shows a post from FutureBeef, 11 hours ago. The text reads: "The smaller the animal, the higher the nutritional requirement will be. It is easiest to divide calves into groups based on weight and age for...". Below the text is a photo of two brown cows in a paddock. A 'Boost Post' button is visible. Below the photo are engagement icons (likes, comments, shares) and a 'Write a comment...' input field.
- Scheduled:** Shows a post scheduled for Dec 31 at 8:00pm. The text reads: "Buying, selling, showing or transporting livestock? Animal Health Declarations for all creatures great and small can be found on the @FarmBiosecurity...". Below the text is a circular logo with a map of Australia and the text 'NATIONAL HEALTH DECLARATION'. A 'Read More' link is present.
- Messages:** Shows a list of messages:
 - Greg Popplewell:** Aug 29, 8:54pm. Message: "Good morning, I was wondering if you happen to have handy the link to the QCL story by any chance? Kind regards. Jodie".
 - Chris Doug Von Pein:** Aug 18, 1:18pm. Message: "We (Doug and Chris von pein of hereward farming near Dalby) called in today Sunday around 11ish to ask about your pastures and stock management, to see what we may be able to learn from you as fellow producers Howe ever no one at house so kept going , now in Georgetown area for a few days."
 - Chris Robbins:** Aug 14, 8:48pm.
 - Gippy Owen Sunshine:** Aug 11, 1:21am.
- Activity:** Shows comments on FutureBeef posts:
 - Belinda Callanan:** View full post - 4 days ago. Comment: "Craig Davison Fiona Davison".
 - Danni Kate Robson:** View full post - 6 days ago. Comment: "Janine Robson 😊😊".
 - Belinda Callanan:** View full post - 7 days ago. Comment: "Sandi Jephcott useful link".

The motivator

Primary goal:

Investigate what type of content is most appealing to our audience and would therefore attract more social media followers if more of that type of content was published.



The analysis

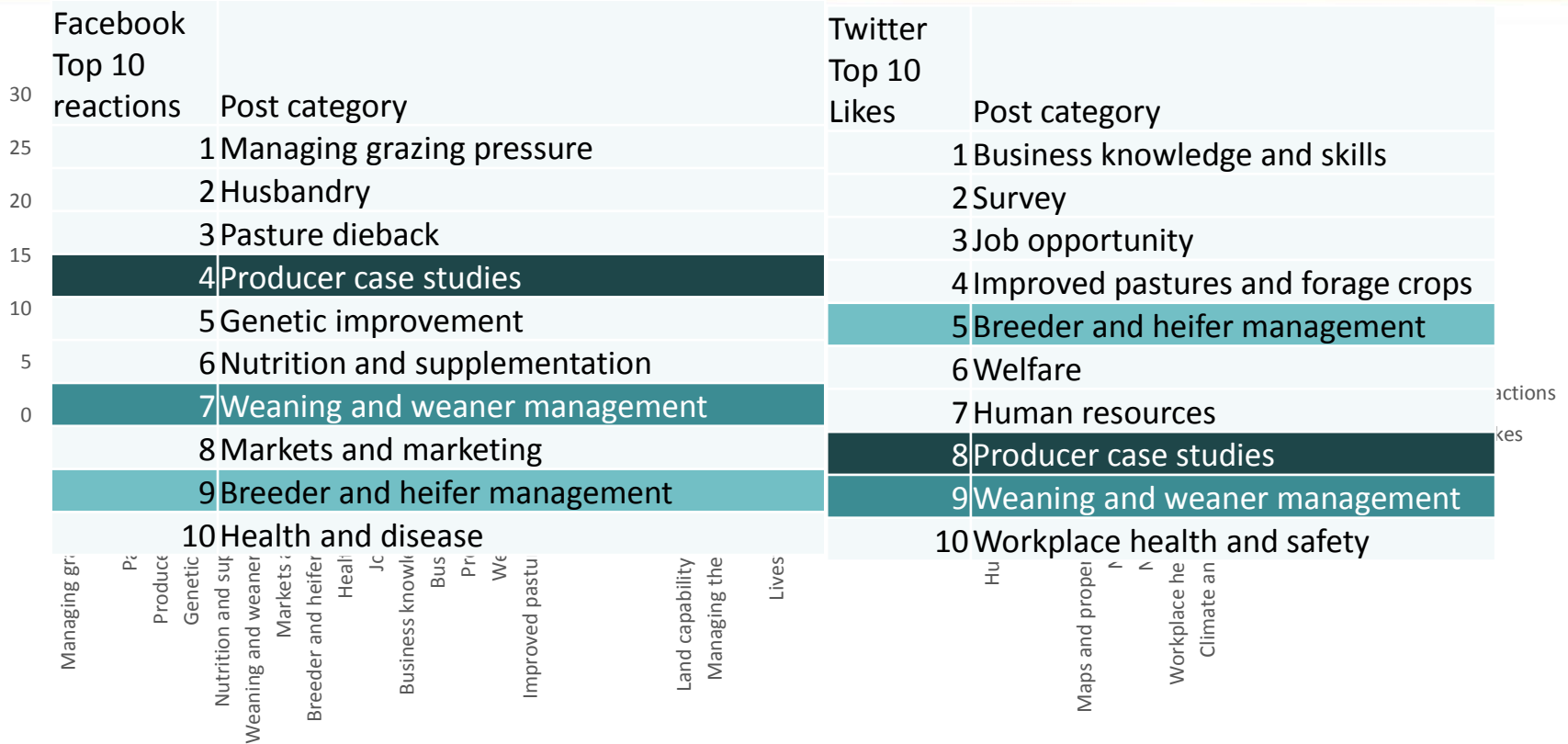
Microsoft Excel spreadsheet showing a list of Facebook posts related to agriculture and livestock. The spreadsheet has columns for Facebook Date (GMT), Facebook Page, Facebook Post ID, FB Post Type, Post URL, FB Post Message, and FB Post category.

FB Date (GMT)	Facebook Page	Facebook Post ID	FB Post Type	Post URL	FB Post Message	FB Post category
2018-06-01 06:15:5	FutureBeef	289993787724254	Photo	http://bit.ly/2F3KUz2	Plunge dips - essential for external parasite control, but here's some tips to ensure maximum efficiency: http://bit.ly/2F3KUz2	Health and disease
2018-06-02 01:15:5	FutureBeef	289993787724254	Photo	http://bit.ly/2Zy6tVB	Post weaning diarrhoea. Unfortunately it can happen. Here's some management guidelines you might find interesting: http://bit.ly/2Zy6tVB	Health and disease
2018-06-03 21:15:5	FutureBeef	289993787724254	Photo	http://bit.ly/2Zy6tVB	Primary producers affected by the recent floods - please find details about the grants and loans available to you by clicking the link below: http://bit.ly/2Zy6tVB	Natural disaster
2018-06-04 06:15:5	FutureBeef	289993787724254	Photo	http://bit.ly/2Zy6tVB	This doesn't happen very often for NI producers! Breeding EDGs, one week (13-15 March) and Nutrition EDGs, the next (19-21 March)! Double check you are re	Nutrition and supplementation
2018-06-05 09:00:1	FutureBeef	289993787724254	Photo	http://bit.ly/2Zy6tVB	Product labels: what are they saying? Here is a brief explanation of some of the common ingredients, how to calculate protein content and compare different s	Nutrition and supplementation
2018-06-06 02:15:4	FutureBeef	289993787724254	Photo	http://bit.ly/2Zy6tVB	Product labels: what are they saying? Here is a brief explanation of some of the common ingredients, how to calculate protein content and compare different s	Nutrition and supplementation
2018-06-07 00:15:4	FutureBeef	289993787724254	Photo	http://bit.ly/2Zy6tVB	Putting the disaster into perspective. Thank you to the AgForce Queensland team for your terrific efforts	Natural disaster
2018-06-07 03:15:19	FutureBeef	289993787724254	Photo	http://bit.ly/2Zy6tVB	Qualities to look for in a farm boot: http://bit.ly/2Zy6tVB No additional words needed. Thanks National Centre for Farmer Health	Workplace health and safety
2018-06-07 08:15:22	FutureBeef	289993787724254	Photo	http://bit.ly/2Zy6tVB	'Scaling' up your business - Rockhampton, 13 February. Have you got scales? Are you getting scales? Do you want scales? If so, this day in Rockhampton is for y	Event
2018-06-07 21:00:1	FutureBeef	289993787724254	Photo	http://bit.ly/2Zy6tVB	Queenslanders, have you spoken to your QLD Rural and Industry Development Authority regional area manager about your business needs? Current programs	Business planning
2018-06-08 06:15:5	FutureBeef	289993787724254	Photo	http://bit.ly/2Zy6tVB	R U OK? Not just today but every day. Stay connected and talk to each other. It is as simple as being a good friend and a great listener. Get some tips here: http://bit.ly/2Zy6tVB	Human resources
2018-06-08 08:15:5	FutureBeef	289993787724254	Photo	http://bit.ly/2Zy6tVB	Rangelands NRM is a natural resource management organisation that oversees 85 per cent (220 million hectares) of Western Australia. The organisation works	Promotion
2018-06-08 08:45:0	FutureBeef	289993787724254	Photo	http://bit.ly/2Zy6tVB	Recat Australia has come up with 5 tips for coping with the stress of being in drought. Find out more here: http://bit.ly/2Zy6tVB	Human resources
2018-06-09 09:00:1	FutureBeef	289993787724254	Photo	http://bit.ly/2Zy6tVB	Registrations are open!	Promotion
2018-06-09 09:00:1	FutureBeef	289993787724254	Photo	http://bit.ly/2Zy6tVB	Registrations close today for BeefEx 2018 - get in quick! Register and more information: https://beefex.com.au/	Event
2018-06-09 09:00:1	FutureBeef	289993787724254	Photo	http://bit.ly/2Zy6tVB	Repronomics: find out the what, why and how. http://bit.ly/2Zy6tVB	Genetic improvement
2018-06-09 09:00:1	FutureBeef	289993787724254	Photo	http://bit.ly/2Zy6tVB	Repronomics: What is it? Why is it? How is it? Find out here: http://bit.ly/2Zy6tVB	Genetic improvement
2018-06-09 09:00:1	FutureBeef	289993787724254	Photo	http://bit.ly/2Zy6tVB	A great post by Animal Health Australia. Some things to be aware of.	Health and disease
2018-06-09 09:00:1	FutureBeef	289993787724254	Photo	http://bit.ly/2Zy6tVB	In difficult times it can be hard to step out of "just get-it-done mode" and into "get-it-right mode". Something we hope might be of use to you right now is this	Workplace health and safety
2018-06-09 09:00:1	FutureBeef	289993787724254	Photo	http://bit.ly/2Zy6tVB	Repronomics: What is it? Why is it? How is it? Find out here: http://bit.ly/2Zy6tVB	Genetic improvement
2018-06-09 09:00:1	FutureBeef	289993787724254	Photo	http://bit.ly/2Zy6tVB	Seasonal mating: the benefits, the challenges and where to start. http://bit.ly/2Zy6tVB	Business planning
2018-06-09 09:00:1	FutureBeef	289993787724254	Photo	http://bit.ly/2Zy6tVB	Don't forget the webinar lunchtime today! Pasture dieback: how to identify it, the latest research findings, potential management options and what Queensland	Event
2018-06-09 09:00:1	FutureBeef	289993787724254	Photo	http://bit.ly/2Zy6tVB	Seasonal mating: the benefits, the challenges and where to start. http://bit.ly/2Zy6tVB	Business planning
2018-06-09 09:00:1	FutureBeef	289993787724254	Photo	http://bit.ly/2Zy6tVB	Several of our FutureBeef staff will be presenting at FBA's multi-topic forum in Rockhampton on 20 November. Topics covered include: nutrition, grazing, biosec	Event
2018-06-09 09:00:1	FutureBeef	289993787724254	Photo	http://bit.ly/2Zy6tVB	Some of most northern WA is under pastoral lease, a diversification permit from the Pastoral Lands Board is required to grow non-indigenous species. A series	Improved pastures and forage c
2018-06-09 09:00:1	FutureBeef	289993787724254	Photo	http://bit.ly/2Zy6tVB	So important: reducing weed risks from importing fodder on your farm. http://bit.ly/2Zy6tVB (PDF 5.72 MB)	Weeds and pests
2018-06-09 09:00:1	FutureBeef	289993787724254	Photo	http://bit.ly/2Zy6tVB	So many benefits of growing grass for good ground cover! Interested? Read more about it: http://bit.ly/2Zy6tVB	Managing the land resource
2018-06-09 09:00:1	FutureBeef	289993787724254	Photo	http://bit.ly/2Zy6tVB	Some great advice from AgForce Queensland (Sharon Parcell)	Managing the land resource
2018-06-09 09:00:1	FutureBeef	289993787724254	Photo	http://bit.ly/2Zy6tVB	Some helpful tips regarding claiming insurance on flood damaged machinery from Queensland including actions that need to be taken sooner rather	Managing the land resource
2018-06-09 09:00:1	FutureBeef	289993787724254	Photo	http://bit.ly/2Zy6tVB	Members of our FutureBeef team from Queensland Agriculture feature in this neat video produced by our friends at #FBA. Can you spot them?	Promotion
2018-06-09 09:00:1	FutureBeef	289993787724254	Photo	http://bit.ly/2Zy6tVB	A sometimes we get so caught up in life we need to be reminded of the simple things. Swathyourpounds National Centre for Farmer Health http://bit.ly/2Zy6tVB	Workplace health and safety
2018-06-09 09:00:1	FutureBeef	289993787724254	Photo	http://bit.ly/2Zy6tVB	Reminder from Animal Health Australia #zoonticdisases #pretyourselfif #floods	Health and disease
2018-06-09 09:00:1	FutureBeef	289993787724254	Photo	http://bit.ly/2Zy6tVB	Stocktake workshop - Goomeroi, 8 May. Get your pasture budgets sorted for winter. Pasture budgets going into winter help determine how many cattle you can	Event
2018-06-09 09:00:1	FutureBeef	289993787724254	Photo	http://bit.ly/2Zy6tVB	Surprisingly fun and somewhat addictive! A new game highlighting the importance of dog bike safety for Apple and Android devices made by Wattle Corp QLD	Workplace health and safety
2018-06-09 09:00:1	FutureBeef	289993787724254	Photo	http://bit.ly/2Zy6tVB	Ten things we can do to manage giant rat's tail grass: http://bit.ly/2Zy6tVB	Weeds and pests
2018-06-09 09:00:1	FutureBeef	289993787724254	Photo	http://bit.ly/2Zy6tVB	Ten things we can do to manage giant rat's tail grass: http://bit.ly/2Zy6tVB	Weeds and pests
2018-06-09 09:00:1	FutureBeef	289993787724254	Photo	http://bit.ly/2Zy6tVB	High energy feed alternatives for the feedlot industry: cassava, sugarcane silage, fats and oils, whole cotton seed: http://bit.ly/2Zy6tVB	Nutrition and supplementation
2018-06-09 09:00:1	FutureBeef	289993787724254	Photo	http://bit.ly/2Zy6tVB	Livestock movement requirements - do you know what you need to do? Find the rules and regulations for the state and territory governments: http://bit.ly/2Zy6tVB	Livestock transport
2018-06-09 09:00:1	FutureBeef	289993787724254	Photo	http://bit.ly/2Zy6tVB	Livestock movement requirements - do you know what you need to do? Find the rules and regulations for the state and territory governments: http://bit.ly/2Zy6tVB	Livestock transport
2018-06-09 09:00:1	FutureBeef	289993787724254	Photo	http://bit.ly/2Zy6tVB	Weaning is a critical component of herd management... but to what degree? http://bit.ly/2Zy6tVB	Managing and weaner managem
2018-06-09 09:00:1	FutureBeef	289993787724254	Photo	http://bit.ly/2Zy6tVB	Join our #BeefConnect webinar Thurs 28 June @12:30pm. Fred Chudleigh, Agricultural Economist will discuss a wide range of strategies including the relative va	Event
2018-06-09 09:00:1	FutureBeef	289993787724254	Photo	http://bit.ly/2Zy6tVB	'We're getting about a 400% return on investment...'. Find out who Tim Schatz, Principal Beef Scientist with NT Department of Primary Industry and Resources, &	Nutrition and supplementation

The analysis: beginning, 39 categories

- Health and disease
- Job opportunities
- Breeder and heifer management
- Husbandry
- Managing grazing pressure
- Markets and marketing
- Managing the land resource
- Pasture dieback
- Infrastructure
- Opportunity
- Producer case studies
- Nutrition and supplementation
- Technology
- FutureBeef promotion
- Human resources
- Welfare
- Workplace health and safety
- Weaning and weaner management
- Livestock transport
- Climate information
- Maps and property information
- Natural disaster
- Weeds and pests
- Growth paths
- Drought
- Using fire
- Other
- Tools
- Biosecurity
- Business knowledge and skills
- Predator control
- Scholarships
- Improved pastures and forage crops
- Surveys
- Land capability and condition
- Spelling
- Business planning
- Genetic improvement
- Event
- Native pastures

The analysis: Reactions versus likes



The analysis: Shares versus Retweets

Facebook Top 10 Shares	Post category	Twitter Top 10 Retweets	Post category
	1 Pasture dieback		1 Survey
	2 Job opportunity		2 Business knowledge and skills
	3 Husbandry		3 Human resources
	4 Breeder and heifer management		4 Producer case studies
	5 Predator control		5 Welfare
	6 Weeds and pests		6 Job opportunity
	7 Managing grazing pressure		7 Breeder and heifer management
	8 Nutrition and supplementation		8 Improved pastures and forage crops
	9 Health and disease		9 Genetic improvement
	10 Weaning and weaner management		10 Predator control

Pasture dieback	Job opportunity	Husbandry	Breeder and heifer management	Weeds and pests	Managing grazing pressure	Nutrition and supplementation	Health and disease	Weaning and weaner management	Scholarships	Drought	Native pastures	Managing the land resource	Opportunity	Workplace health and safety	Human resources	Business planning	Genetic improvement	Natural disaster	Markets and marketing	Business knowledge and skills	Infrastructure	Event	Improved pastures and forage crops	Welfare	Producer case studies	Biosecurity	Maps and property information	Land capability and condition	Livestock transport	Growth paths	Promotion	Survey	Spelling	Technology	Tools	Climate and environment	(blank)	Using fire
-----------------	-----------------	-----------	-------------------------------	-----------------	---------------------------	-------------------------------	--------------------	-------------------------------	--------------	---------	-----------------	----------------------------	-------------	-----------------------------	-----------------	-------------------	---------------------	------------------	-----------------------	-------------------------------	----------------	-------	------------------------------------	---------	-----------------------	-------------	-------------------------------	-------------------------------	---------------------	--------------	-----------	--------	----------	------------	-------	-------------------------	---------	------------

The analysis: Comments versus Replies

140

120



Facebook Top 10 Comments	Post category	Twitter Top 10 Replies	Post category
1	Job opportunity		1 Business knowledge and skills
2	Weeds and pests		2 Maps and property information
3	Pasture dieback		3 Climate and environment
4	Husbandry		4 Opportunity
5	Managing grazing pressure		5 Job opportunity
6	Scholarships		6 Growth paths
7	Opportunity		7 Managing the land resource
8	Managing the land resource		8 Breeder and heifer management
9	Biosecurity		9 Promotion
10	Survey		10 Event

ge of FB Ow.ly Clicks
ge of Tw: Ow.ly Clicks

Breeder and heifer management
Business knowledge and skills
Climate and environment
General
He
H
Improved pastures and grazing systems
Land capability
Livestock
Managing the land resource
Managing the land resource
Maps and property information
Market
Nutrition and supplements
Productivity
Weaning and weaning systems
Workplace safety

The analysis: Hyperlink clicks

140

120

Facebook Top 10 Hyperlink clicks	Post category	Twitter Top 10 Hyperlink clicks	Post category
	1 Health and disease		1 Scholarships
	2 Job opportunity		2 Business knowledge and skills
	3 Breeder and heifer management		3 Survey
	4 Husbandry		4 Managing grazing pressure
	5 Managing grazing pressure		5 Human resources
	6 Markets and marketing		6 Weaning and weaner management
	7 Managing the land resource		7 Event
	8 Pasture dieback		8 Job opportunity
	9 Infrastructure		9 Livestock transport
	10 Opportunity		10 Growth paths

icks

licks

Analysis: How to use this information?

Should we create more posts from categories that generate:

- the most likes/reactions?
- the most comments/replies?
- the most traffic to the website?
- the most shares/retweets?

Why?

Analysis: How we've decided to use this information

1. Increase the publication frequency of posts that get shared/retweeted

2. Increase the publication frequency of posts that get the most hyperlink clicks

How?

3. Maintain the publication frequency of publication of posts that get publicly liked.

4. Remove the categories of content from our scheduled social media that is attracting no engagement

Where to from here?



- Monitor
- Monitor
- Monitor
- Adjust
- Monitor
- Write a REIS Journal article