



GATE
GLOBAL AG-TECH ECOSYSTEM



Department of
Primary Industries



NSW DPI *VineWatch*

Connecting the NSW wine industry



Department of
Primary Industries



GATE
GLOBAL AG-TECH ECOSYSTEM



**Hort
Innovation**







Department of
Primary Industries

NEW SOUTH WALES
wine



NSW DPI VineWatch

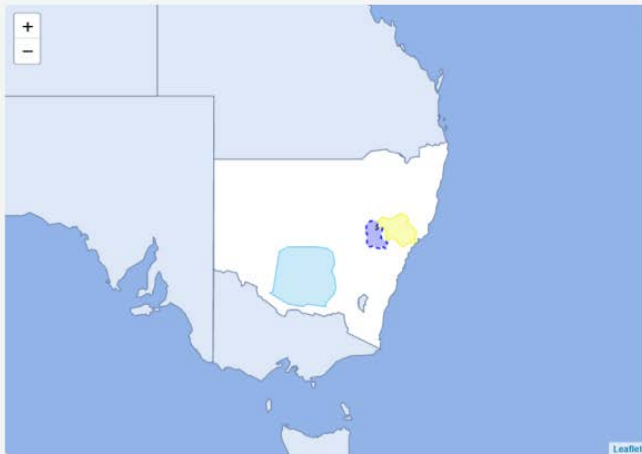


WINE AUSTRALIA

OPPORTUNITY

VineWatch Minimal Viable Product

Select a NSW wine region



Season Period

August 2019 - Spring Vine Health Field Days

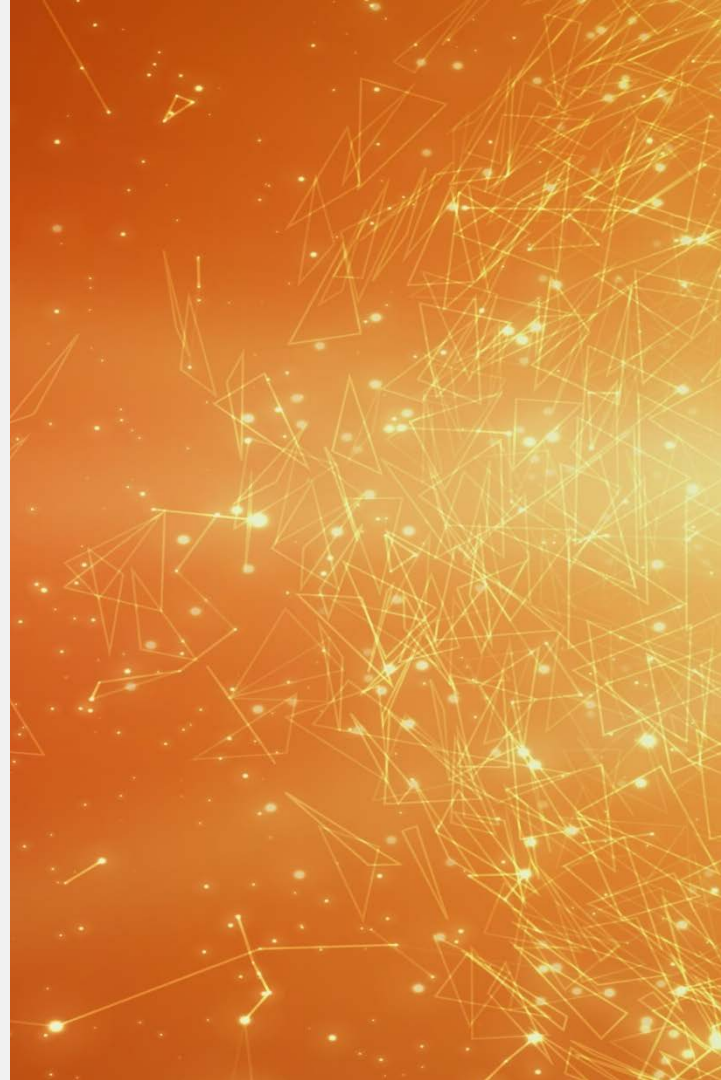
Select

Hunter Valley

Mudgee

Riverina

Continue



OPPORTUNITY

VineWatch An initiative of NSW Department of Primary Industries

Mudgee



Seasonal development

Shiraz EL 3: Woolly bud with green tips showing Dry conditions have increased frost risk. Please refer to viticulture recommendations.	Chardonnay (pictured) EL 4: Budburst; leaf tips visible Seasonal development is one week behind recent seasons
---	---

Pest and disease issues

[Powdery mildew](#) [Downy mildew](#)

Viticulture recommendations

With dry conditions occurring, irrigation is an important early season consideration for establishing canopy size and potential yield. Understanding soil type and readily available water (RAW) is critical for successful irrigation management.

Further information:

- [Water management for wine grapes in a drying environment](#)
- [Maintaining a drip irrigation system for essential horticulture](#)
- [DPI PrimeFact: Determining readily available water to assist with irrigation management](#)
- [ExtensionAUS: Managing horticultural crops with less water.](#)

As vine canopies continue to grow, calibration of spray equipment (fungicide and herbicide equipment) is critical to apply the right amount to chemical and achieve desired results.

The [2018-19 Sixteenvine management guide](#) (page 92-104) article Spray application: the importance of calibration, outlines vineyard calibration methods and also includes calibration sheets for both fungicide and herbicide applications.


NSW DPI - news and events

NSW DPI 2019 Spring Vine Health Field Days


VineWatch An initiative of NSW Department of Primary Industries

← Change Region

Powdery mildew



Regions at risk




- [Hunter Valley](#) VIEW
- [Mudgee](#) VIEW
- [Riverina](#) VIEW

Pest and disease information

The first 40 days after budburst are critical for 'lag phase' powdery mildew control before inoculum develops to levels that are harder to control. Spray coverage is critical for early season powdery mildew control and to reduce late-season outbreaks (pictured).

Further information:

- [Wine Australia Powdery mildew resources](#)
- [Wine Australia Episodes of spray application \(video\)](#)
- [CPI Early season vineyard spray considerations](#)



THE NEXT STEPS

Develop a truly interactive RD&E platform for the NSW viticulture industry

Increase adoption of world-class R&D by the wine industry to improve NSW grape and wine quality and premium paid for NSW wine.





WWW.NSWDPIVINEWATCH.COM.AU

With thanks to the

Department of Primary Industries

and the

Global Ag Tech Ecosystem



Department of
Primary Industries



GATE
GLOBAL AG-TECH ECOSYSTEM